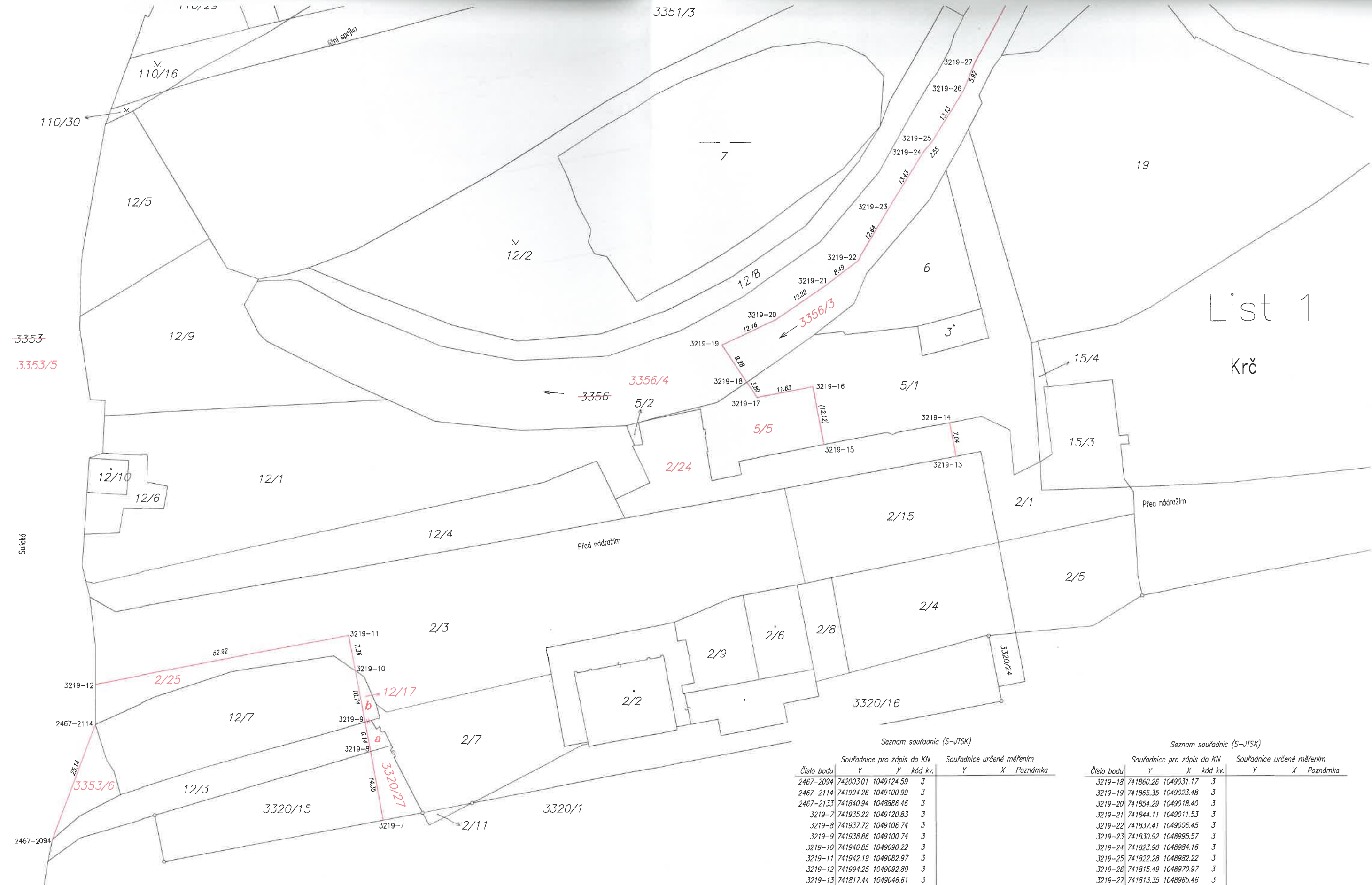


List 1
Krč



Seznam souřadnic (S-JTSK)

| Číslo bodu | Souřadnice pro zápis do KN | | | Souřadnice určené měřením | |
|------------|----------------------------|------------|---------|---------------------------|------------|
| | Y | X | kód kv. | Y | X Poznámka |
| 2467-2094 | 742003.01 | 1049124.59 | 3 | | |
| 2467-2114 | 741994.26 | 1049100.99 | 3 | | |
| 2467-2133 | 741840.94 | 1048886.46 | 3 | | |
| 3219-7 | 741935.22 | 1049120.83 | 3 | | |
| 3219-8 | 741937.72 | 1049106.74 | 3 | | |
| 3219-9 | 741938.86 | 1049100.74 | 3 | | |
| 3219-10 | 741940.85 | 1049090.22 | 3 | | |
| 3219-11 | 741942.19 | 1049082.97 | 3 | | |
| 3219-12 | 741994.25 | 1049092.80 | 3 | | |
| 3219-13 | 741817.44 | 1049046.61 | 3 | | |
| 3219-14 | 741818.74 | 1049039.73 | 3 | | |
| 3219-15 | 741844.47 | 1049044.10 | 3 | | |
| 3219-16 | 741846.71 | 1049032.19 | 3 | | |
| 3219-17 | 741858.17 | 1049034.34 | 3 | | |

Seznam souřadnic (S-JTSK)

| Číslo bodu | Souřadnice pro zápis do KN | | | Souřadnice určené měřením | |
|------------|----------------------------|------------|---------|---------------------------|------------|
| | Y | X | kód kv. | Y | X Poznámka |
| 3219-18 | 741860.26 | 1049031.17 | 3 | | |
| 3219-19 | 741865.35 | 1049023.48 | 3 | | |
| 3219-20 | 741854.29 | 1049018.40 | 3 | | |
| 3219-21 | 741844.11 | 1049011.53 | 3 | | |
| 3219-22 | 741837.41 | 1049006.45 | 3 | | |
| 3219-23 | 741830.92 | 1048995.57 | 3 | | |
| 3219-24 | 741823.90 | 1048984.16 | 3 | | |
| 3219-25 | 741822.28 | 1048982.22 | 3 | | |
| 3219-26 | 741815.49 | 1048970.97 | 3 | | |
| 3219-27 | 741813.35 | 1048965.46 | 3 | | |
| 3219-28 | 741798.15 | 1048937.23 | 3 | | |
| 3219-29 | 741778.58 | 1048925.00 | 3 | | |
| 3219-30 | 741829.16 | 1048835.23 | 3 | | |
| 3219-31 | 741820.21 | 1048874.90 | 3 | | |



7

19

110/1

110/21

110/22

110/23

110/19

110/20

335281

110/14

110/2

110/42

110/41

Branická

48/1

110/45

110/4

110/17

43

110/44

110/26

3351/1

3351/4

110/27

3351/5

26

V požární

110/28

110/29

9

20

Jihní spojná

3351/3

110/16

3219-28

3219-29

110/30

3219-27

3219-26

3219-25

3219-24

3219-23

12/5

12/2

3219-23

94

95

34/1

48/5

48/8

48/7

3219-30

3357/8

3357/7

3357

3219-31

23.78

2467-2133

19